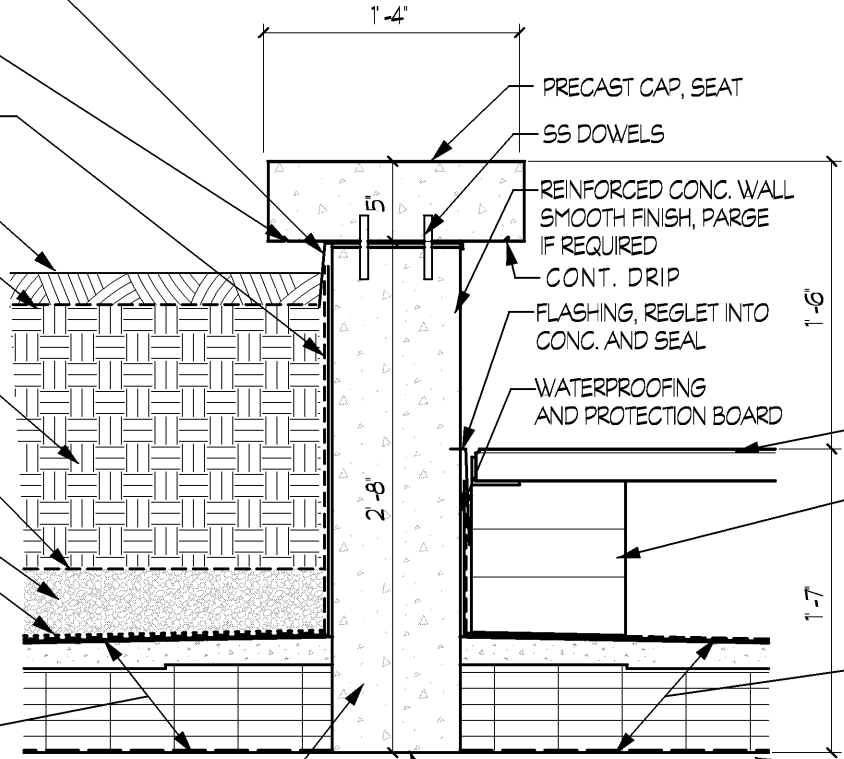


ALL WATERPROOFING INSTALLATION, FLASHING, TERMINATIONS, ETC. TO BE INSTALLED PER MANUFACTURERS RECOMMENDATIONS, TYPICAL

NOTE:
CONTRACTOR TO PROVIDE WATERPROOFING SPECIFIC TO CONDITIONS SHOWN AND PROJECT SUBMITTAL PROCESS. TYPICAL

- FLASHING, TERMINATE UNDER PRECAST CAP
- CONT. DRIP
- WATERPROOFING AND PROTECTION BOARD
- MULCH
- WEED MAT, EROSION CONTROL
- GROWTH MEDIA
- GEOTEXTILE FILTER FABRIC
- GRANULAR DRAINAGE MEDIA, 3" AT PERIMETER
- DRAINAGE COMPOSITION
- WATERPROOFING SYSTEM



- PRECAST CAP, SEAT
- SS DOWELS
- REINFORCED CONC. WALL SMOOTH FINISH, PARGE IF REQUIRED
- CONT. DRIP
- FLASHING, REGLET INTO CONC. AND SEAL
- WATERPROOFING AND PROTECTION BOARD

- PAVERS W/ SPACER
- SRS LEVELING SYSTEM
- EXTRUDED POLYSTYRENE FOAM

WATERPROOFING SYSTEM
 SARNAFIL G445 PROTECTION LAYER
 SARNAFIL G476-20(80 MIL) FELTBK MEMBRANE
 TAPERED LIGHTWEIGHT CONCRETE, MIN.2" COVERAGE
 TAPERED OR STEPPED INSULATION, R-20 AVE. MIN 2"
 DRYLINE PEEL AND STICK VAPOR BARRIER

REINFORCED CONC. WALL - SEE STRUCT. DRAWINGS

DOWEL INTO EXIST. STRUCT

EXISTING BASE VAPOR BARRIER
 EXIST. STRUCT. SLAB

CONCRETE MIX TO CONTAIN WATERPROOFING ADMIXTURE - SEE SPECIFICATION